

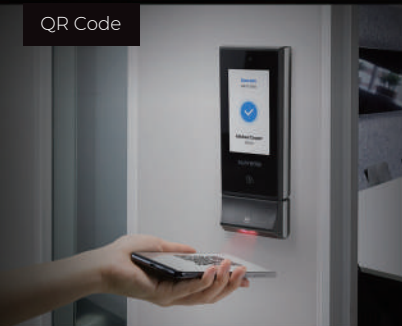
X-Station 2

Versatile Intelligent Terminal

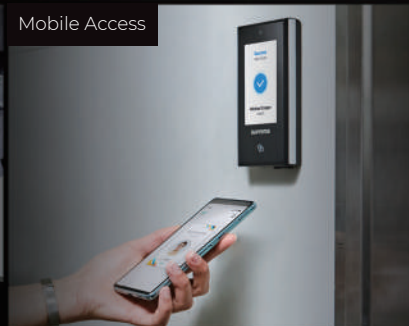


Suprema X-Station 2 is a versatile intelligent terminal that supports various credentials, such as QR codes, Mobile Access, RFID cards and fingerprints, offering the ultimate flexibility in terms of credential options and system design.

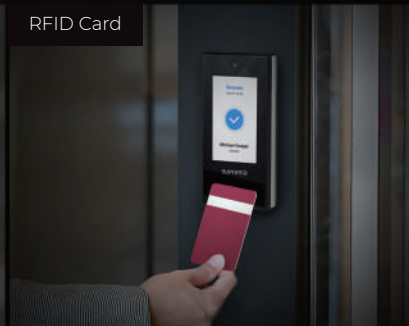
QR Code



Mobile Access



RFID Card



Fingerprint





Suprema
SECURITY & BIOMETRICS

X-Station 2

Versatile Intelligent Terminal

Benefits at a glance

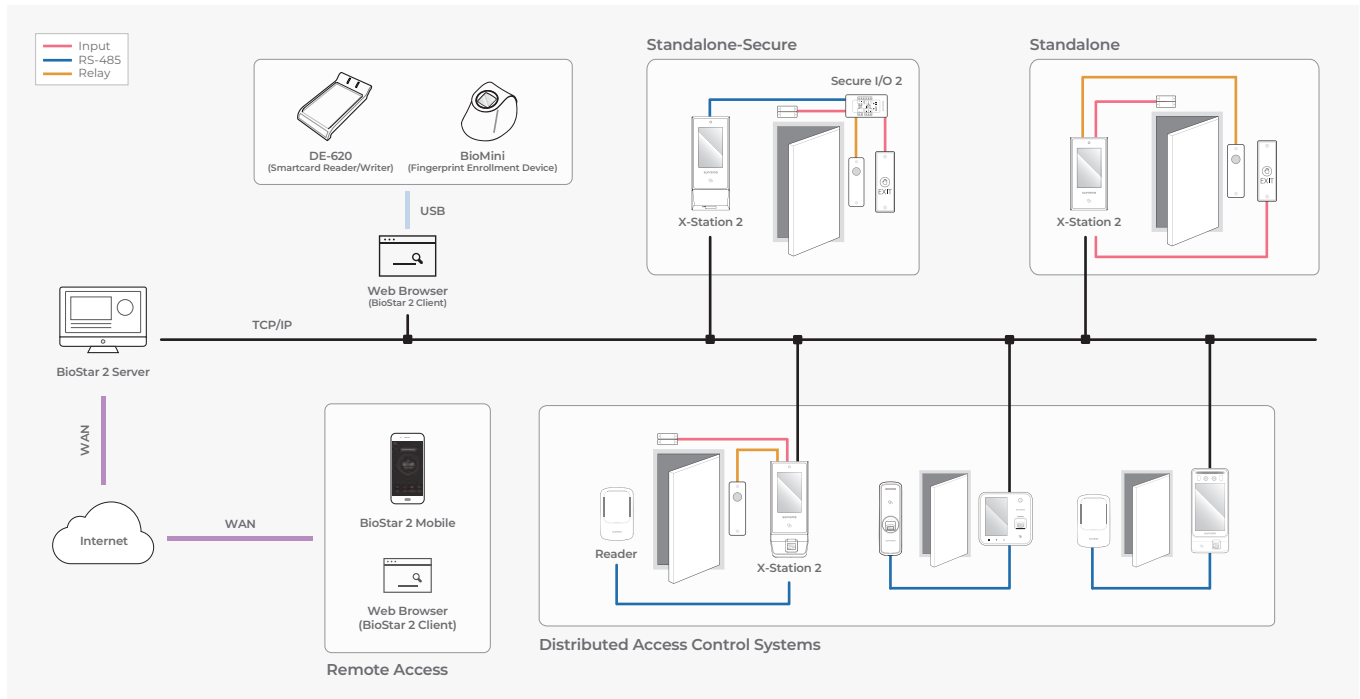
- 
Multi-technology Terminal with Various Credential Options
 - Multiple credential options of QR codes, Mobile Access, RFID cards and fingerprints can provide maximum system design flexibility
 - Go mobile, card-less and carefree by using smartphones as credentials
- 
Leading-edge Fingerprint Recognition
 - MINEX-Certified Algorithm
 - Fake/Live Finger Detection
 - Max. Credential: 100,000 (1:N)
- 
Comprehensive RFID Card Compatibility
 - LF (125 kHz), HF (13.56 MHz) dual-band
 - Reads various card types (EM/MIFARE/iCLASS/DESFire/FeliCa)
- 
Enhanced Security and Data Protection
 - Protects data with secure boot process
 - Built-in camera captures image logs for added security
 - Open Supervised Device Protocol (OSDP) for secure bidirectional communication between the terminal and controller
- 
Designed for easy deployment and management
 - Power over Ethernet (PoE) enables convenient installation with less wiring
 - Dust-tight and waterproof IP65 protection
- 
Improved Usability of Intuitive UI on Touchscreen
 - Quick and easy access to features on 4" wide capacitive touchscreen
 - Customizable display on intuitive GUI
- 
Expanded Capacity for more users and security logs
 - Max. 500k users, 5 million text logs, 50k image logs
 - Large memory: 16 GB Flash + 1 GB RAM

Specifications

Model Name	XS2-DPB	XS2-QDPB	XS2-ODPB	XS2-APB	XS2-QAPB	XS2-OAPB
RF Option	125 kHz EM & 13.56 MHz MIFARE, MIFARE Plus, DESFire EV1/EV2 ^① , FeliCa			125 kHz EM, HID Prox & 13.56 MHz MIFARE, MIFARE Plus, DESFire EV1/EV2 ^① , FeliCa, iCLASS SE/SR/Seos		
Mobile Card	NFC, BLE					
QR/Barcode	N/A	Supported ^②	N/A	N/A	Supported ^②	N/A
Biometrics	N/A	N/A	Fingerprint	N/A	N/A	Fingerprint
Scrambled Keypad (PIN)	Supported					
CPU	1.5 GHz Quad Core					
Memory	16 GB Flash + 1 GB RAM					
Crypto Chip	Supported					
Max. User	500,000 ^③					
Max. Credential (1:N)	N/A	N/A	100,000	N/A	N/A	100,000
Max. Credential (1:1)	Card: 500,000 PIN: 500,000	Card: 500,000 PIN: 500,000	Fingerprint: 500,000 Card: 500,000 PIN: 500,000	Card: 500,000 PIN: 500,000	Card: 500,000 PIN: 500,000	Fingerprint: 500,000 Card: 500,000 PIN: 500,000
Max. Logs	Text 5,000,000 / Image 50,000					
LCD	4" IPS color LCD / 480 x 800 pixels					
Camera	CMOS 2M pixels / 1600 x 1200					
Ethernet	Supported (10/100 Mbps, auto MDI/MDI-X)					
RS-485	1 ch Host or Slave (Selectable)					
Wiegand	1 ch Input or Output (Selectable)					
TTL	2 ch Inputs					
Relay	1 Relay					
USB	USB 2.0 (Host)					
PoE	Supported (IEEE 802.3af compliant)					
IP Rating	IP65					
Tamper	Supported					
Power	DC 12 V (Max. 0.8 A) or DC 24 V (Max. 0.45 A)					
Dimensions (W x H x D, mm)	82 mm x 159 mm x 25.9 mm	82 mm x 203 mm x 33.9 mm	82 mm x 208.5 mm x 25.9(53) mm	82 mm x 159 mm x 25.9 mm	82 mm x 203 mm x 33.9 mm	82 mm x 208.5 mm x 25.9(53) mm
Operating Temperature	-20°C~50°C (-4°F~122°F)					
Certificates	KC, CE, UKCA, FCC, RCM (Compliance: RoHS, REACH, WEEE)					

^① DESFire EV2 cards are supported by having backward compatibility of DESFire EV1 cards. CSN and smart card functions are compatible with X-Station 2.
^② Supports QR/Barcodes composed of up to 32 ASCII code strings. QR codes can be issued on Suprema BioStar 2 or 3rd party systems.
^③ The number of users registered without having any credential data.

System Configurations



Suprema Inc.

17F Parkview Tower, 248, Jeongjail-ro, Bundang-gu, Seongnam-si, Gyeonggi-do, 13554, Republic of Korea
 T +82 31 783 4502 www.supremainc.com



For more information visit our website below by scanning the QR code.
<https://www.supremainc.com/en/about/contact-us.asp>